

GRAND LAKE SNOWMOBILE TRAIL SYSTEM

**SUPPORT
OUR
SPONSORS**

NEVER SUMMER WILDERNESS

- Basic Rules of the Trail:**
- 1) Don't drink and ride
 - 2) Obey speed limits
 - 3) Respect private property
 - 4) Maintain a safe following distance
 - 5) Stay to your side of the trail
 - 6) Keep the trail clear --
 - a. Don't stop on blind turns
 - b. Don't park double on the trail
 - 7) Ride to your ability
 - 8) Don't ride alone
 - 9) Don't approach or harass wildlife

EMERGENCY 911

Grand County Sheriff's Office	911 (970) 725-3343
Rocky Mountain N. P. (West Side)	(970) 627-3471
Town of Grand Lake	(970) 627-3435
U.S. Forest Service (Granby)	(970) 887-4100

AVALANCHE POTENTIAL

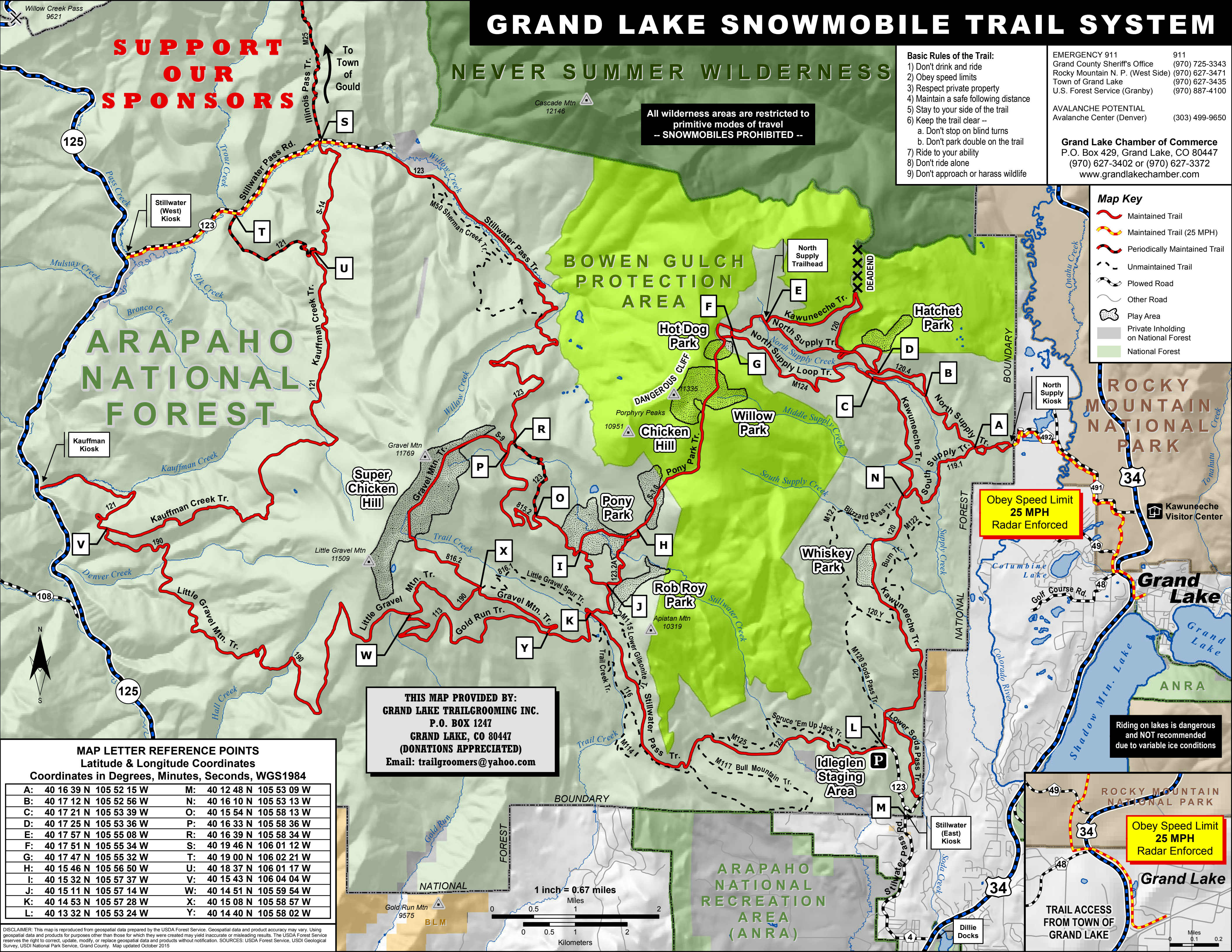
Avalanche Center (Denver)	(303) 499-9650
---------------------------	----------------

Grand Lake Chamber of Commerce
 P.O. Box 429, Grand Lake, CO 80447
 (970) 627-3402 or (970) 627-3372
 www.grandlakechamber.com

All wilderness areas are restricted to primitive modes of travel -- SNOWMOBILES PROHIBITED --

Map Key

- Maintained Trail
- Maintained Trail (25 MPH)
- Periodically Maintained Trail
- Unmaintained Trail
- Plowed Road
- Other Road
- Play Area
- Private Inholding on National Forest
- National Forest



**ARAPAHO
NATIONAL
FOREST**

**BOWEN GULCH
PROTECTION
AREA**

**ROCKY MOUNTAIN
NATIONAL
PARK**

**Obey Speed Limit
25 MPH
Radar Enforced**

**Riding on lakes is dangerous
and NOT recommended
due to variable ice conditions**

**Obey Speed Limit
25 MPH
Radar Enforced**

**THIS MAP PROVIDED BY:
GRAND LAKE TRAILGROOMING INC.
P.O. BOX 1247
GRAND LAKE, CO 80447
(DONATIONS APPRECIATED)
Email: trailgroomers@yahoo.com**

MAP LETTER REFERENCE POINTS
Latitude & Longitude Coordinates
Coordinates in Degrees, Minutes, Seconds, WGS1984

A: 40 16 39 N 105 52 15 W	M: 40 12 48 N 105 53 09 W
B: 40 17 12 N 105 52 56 W	N: 40 16 10 N 105 53 13 W
C: 40 17 21 N 105 53 39 W	O: 40 15 54 N 105 58 13 W
D: 40 17 25 N 105 53 36 W	P: 40 16 33 N 105 58 36 W
E: 40 17 57 N 105 55 08 W	R: 40 16 39 N 105 58 34 W
F: 40 17 51 N 105 55 34 W	S: 40 19 46 N 106 01 12 W
G: 40 17 47 N 105 55 32 W	T: 40 19 00 N 106 02 21 W
H: 40 15 46 N 105 56 50 W	U: 40 18 37 N 106 01 17 W
I: 40 15 32 N 105 57 37 W	V: 40 15 43 N 106 04 04 W
J: 40 15 11 N 105 57 14 W	W: 40 14 51 N 105 59 54 W
K: 40 14 53 N 105 57 28 W	X: 40 15 08 N 105 58 57 W
L: 40 13 32 N 105 53 24 W	Y: 40 14 40 N 105 58 02 W

DISCLAIMER: This map is reproduced from geospatial data prepared by the USDA Forest Service. Geospatial data and product accuracy may vary. Using geospatial data and products for purposes other than those for which they were created may yield inaccurate or misleading results. The USDA Forest Service reserves the right to correct, update, modify, or replace geospatial data and products without notification. SOURCES: USDA Forest Service, USDI Geological Survey, USDI National Park Service, Grand County. Map updated October 2015